



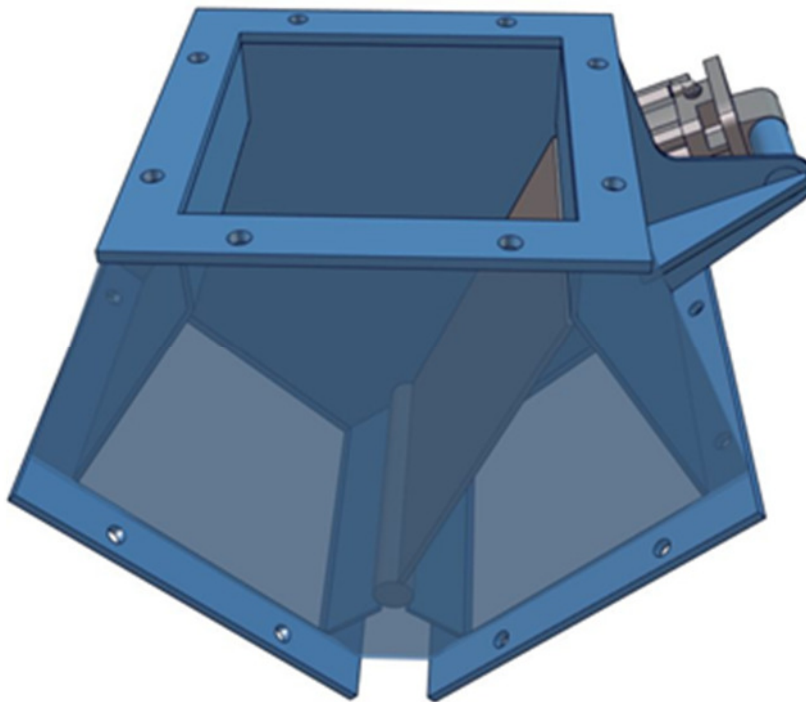
Datasheet

Solids- Diverter flaps

VDP90-Basic



Switching the bulk solids flow in a downstream pipe, two ways,
cross section adaptable



Advantages:

- Simple assembly
- Sturdy design
- Compact, space-saving installation
- Low maintenance

approval	MIGSA	SST	Mr. Linder
	date:	date:	date:
	sign:	sign:	sign:
		13.10.2016	Le
			13.10.2016
			Li

Preliminary
Modifications reserved



solids solutions group

www.solids.eu



Datasheet

Solids- Diverter flaps

VDP90-Basic

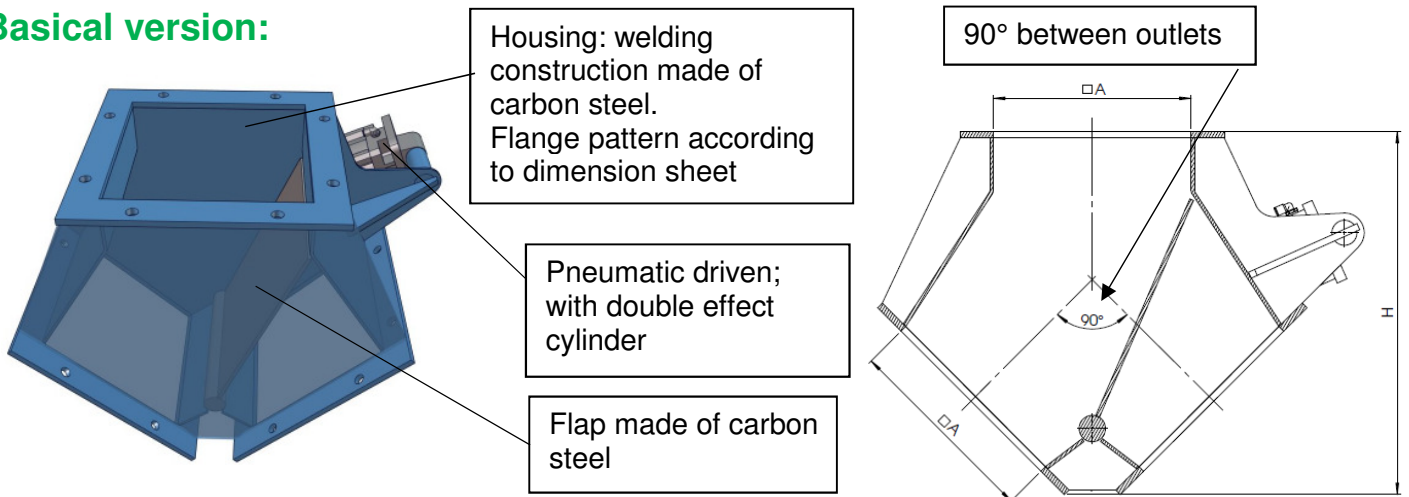


Operating conditions:

- Permissible operation pressure: atmospheric up to 0,1 bar g
- Product temperature max.: 100°C
- Max./min. ambient temperature: $-10\text{ °C} \leq T \leq 50\text{ °C}$
- Solid to bulk data: powders and granules, medium hardness, free flowing

Type	Input/output (mm)	Height (mm)	Weight (KG)
VDP9015B01	150x150 mm	385	30
VDP9020B01	200x200 mm	430	45
VDP9025B01	250x250 mm	530	60
VDP9030B01	300x300 mm	550	75
VDP9035B01	350x350 mm	600	90
VDP9040B01	400x400 mm	650	105
VDP9045B01	450x450 mm	700	160
VDP9050B01	500x500 mm	750	245

Basical version:



This is not an equipment according ATEX-directive 2014/34/EU, but in contact with product (inside) usable in the zones 20-21-22. Additional electrical parts must be approved for the chosen ATEX-zone.

Switching during flowing product flow is only admissible in exceptional cases and after agreement of the manufacturer. Interrupt the product flow shortly before switching (e.g. lock using a slider, stop the conveyor device).

It is not allowed to switch the flap in the non flowing product columnne.

It is not allowed to switch the flap, if in one exit the product is not flowing out.

Surface treatment: chemical stripping,
primer 40 µm of zinc phosphate,
painted with 40 µm of 2-component polyurethane, Blue RAL5012



solids solutions group

www.solids.eu

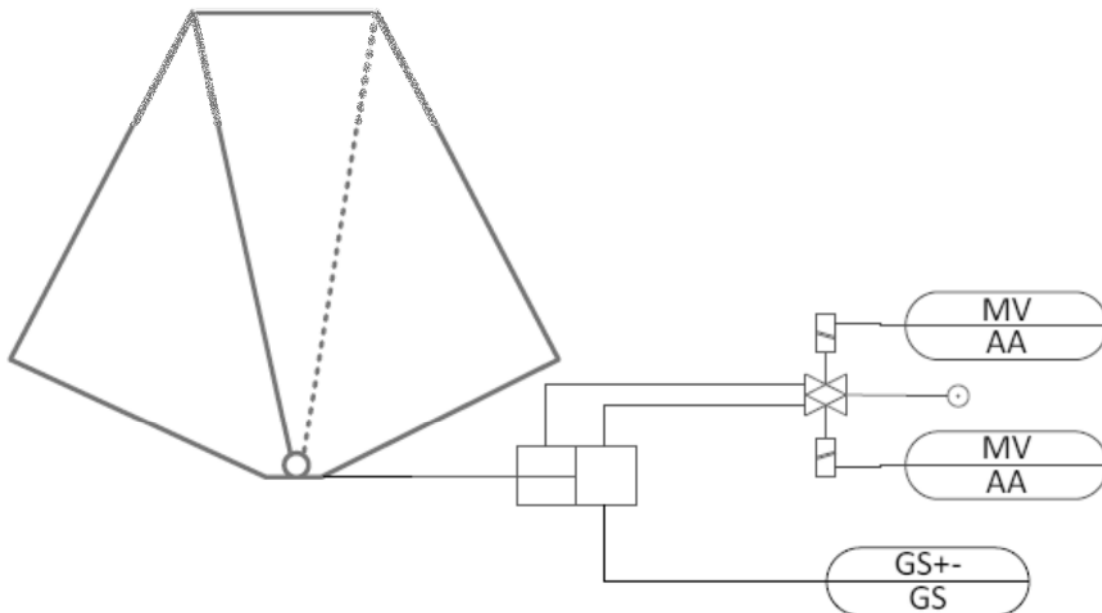


Datasheet Solids- Diverter flaps VDP90-Basic



Electric parts:

	Denomination	Manufacturer	Type
VDP001	Inductive initiators	IFM	IFS240
	magnetic detectors	SMC	D-M9PL
VDP002	Solenoid valves	Norgren	2623100



solids solutions group

www.solids.eu



Datasheet

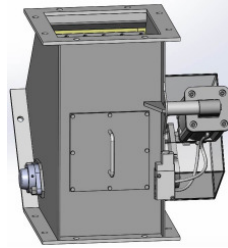
Solids- Diverter flaps

VDP90-Basic



Options:

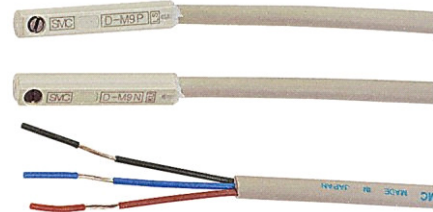
1. Dust-tight for powder products with polyurethane joint until 80°C
2. Dust-tight for powder products with Viton joint until 250°C
3. With an inspection window
4. Parts in contact with product made of wear resistant steel.
5. Parts in contact with product made of stainless steel 1.4306 (DIN) / 304L (AISI)
6. Parts in contact with product made of stainless steel 1.4404 (DIN) / 316L (AISI)



7. with 5/2-way solenoid valve for cylinder control



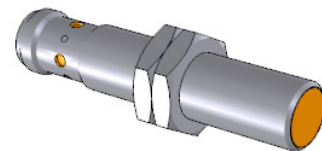
8. With 2 magnetic detectors on the cylinder, inclusive cable and junction box



9. With 2 electro mechanical limit switches



10. With 2 inductive detectors, inclusive wirable socket



11. electrical parts outside for zone 2/22

12. electrical parts outside for zone 1/21

Associated documents:

3D-part: Type.step (e.g: **VDP9015B01**. Step)
2D layout drawing: Type.dxf (e.g. **VDP9015B01**. dxf)
Selection guide: SG-VDP
Price list: PL-VDP90-Basic
list of drawing numbers: Draw-No-List_ VDP90-Basic



solids solutions group

www.solids.eu