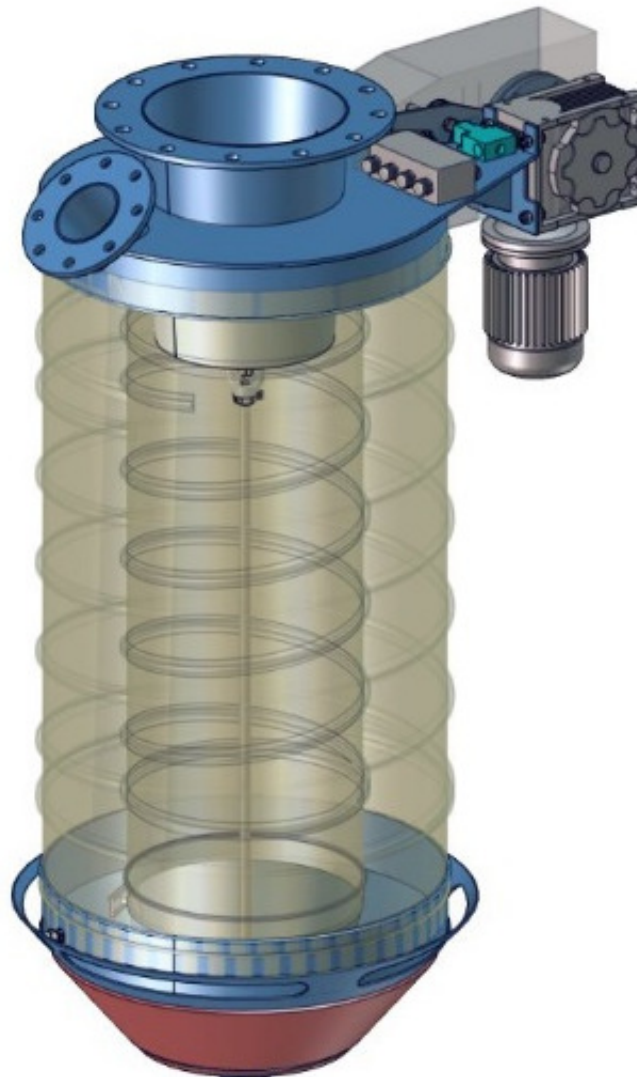




Datasheet
solids – Filling Chute
TLC-Basic



For dust-free loading of bulk solids from silos or processes into trucks or wagons. Version with dual bellows, inside rope and dustproof docking system (optional).



Advantages:

- Fail-safe due to the electro-pneumatic installation, level sensor, limit switches and complete control unit (options)
- Less operating costs owing to high loading capacity and short holding times of the vehicles
- Can be used globally; suitable for almost all bulk solids
- More advantages see options



solids solutions group
www.solids.eu





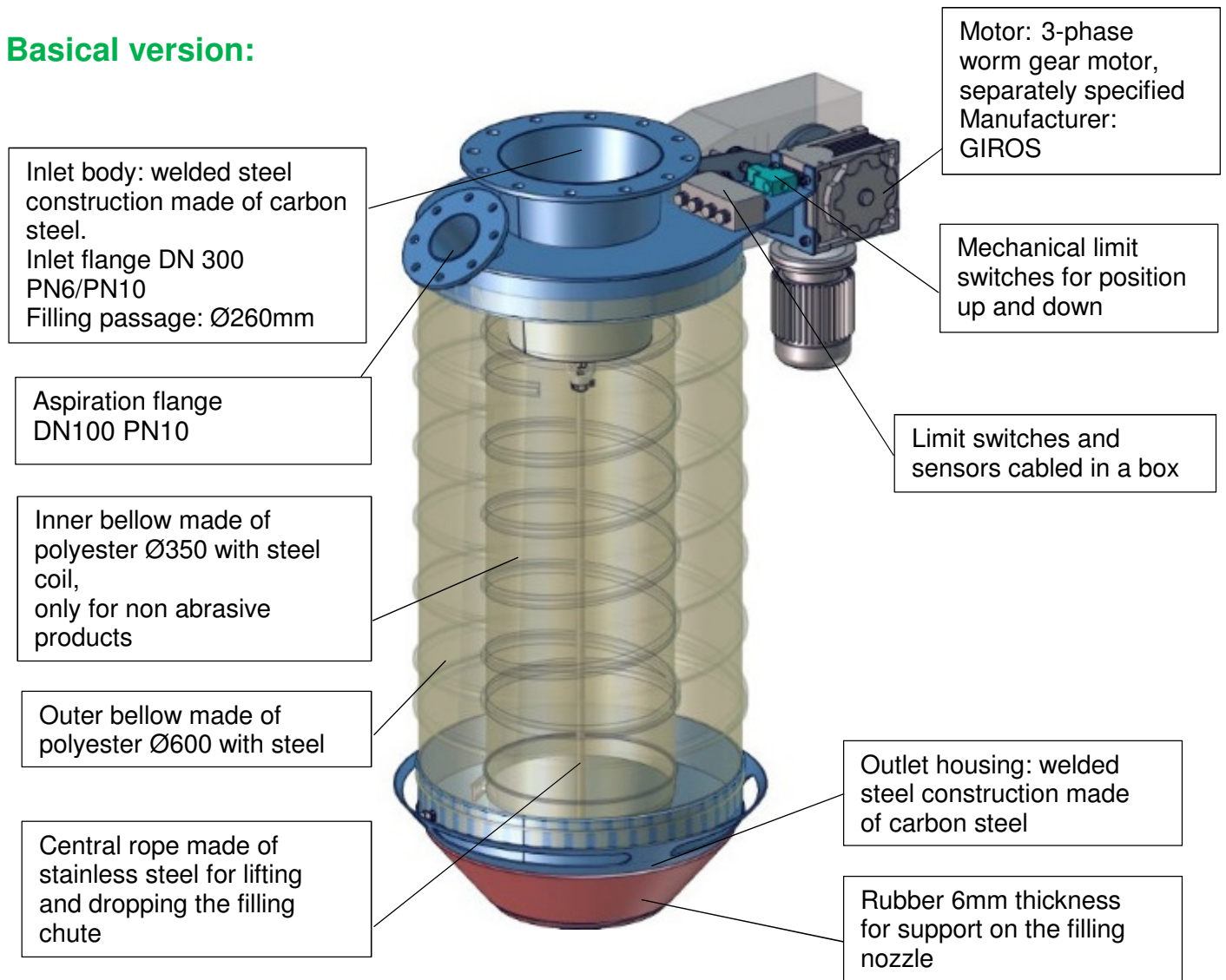
Datasheet solids – Filling Chute TLC-Basic



Operating conditions:

Max. temperature.: 80°C
 Estimated flow: ~125m³/h.
 Aspiration air flow: max. 600 m³/h
 Solid to bulk data:
 Particle size: powders and granules, medium hardness
 Fluidity: for products up to poor fluidity

Basical version:



Surface treatment:
 Chemical stripped, primer 40 µm of zinc phosphate,
 painted with 40 µm of 2-component polyurethane, blue RAL5012

| | | | |
|-----------|-------|-------|-----------|
| approval: | MIGSA | SST | H. Linder |
| Date: | Sign: | Date: | Sign: |

Preliminary modifications reserved



solids solutions group
www.solids.eu





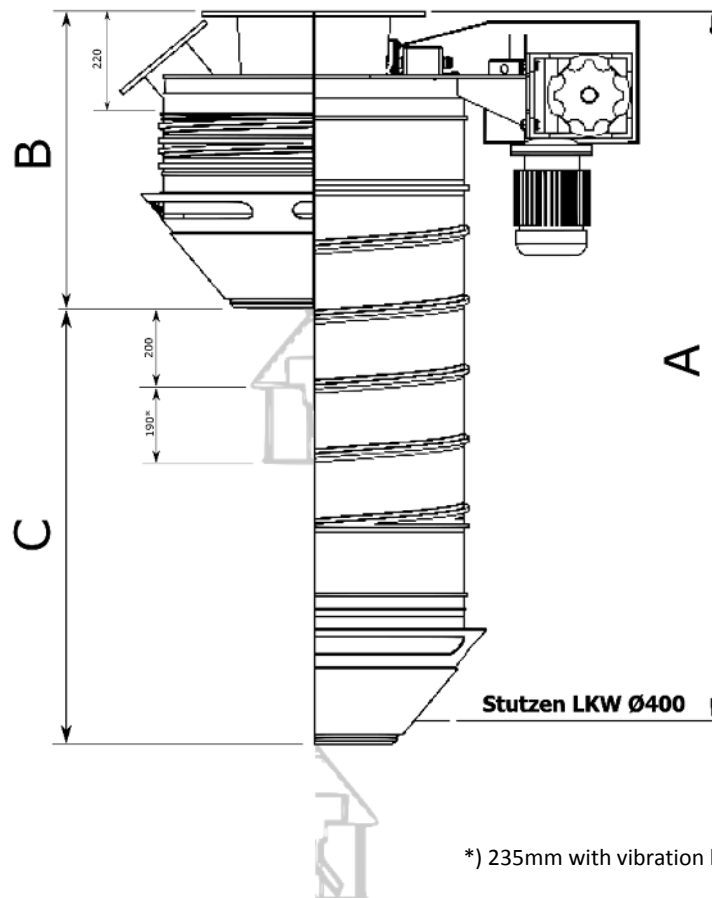
Datasheet solids – Filling Chute TLC-Basic



| Type | Height to Truck Nozzle A (mm) | Retracted Length B ** (mm) | Stroke C (mm) | Weight (kg) |
|---------------------|---|--------------------------------------|-------------------------|-------------|
| TLC0301B01 | 1070 | 680 | 440 | 144 |
| TLC0302B01 | 1260 | 690 | 570 | 150 |
| TLC0303B01 | 1450 | 700 | 800 | 156 |
| TLC0304B01 | 1640 | 710 | 980 | 162 |
| TLC0305B01 | 1830 | 720 | 1160 | 168 |
| TLC0306B01 | 2020 | 765 | 1305 | 174 |
| TLC0307B01 | 2210 | 800 | 1460 | 180 |
| TLC0308B01 * | 2400 | 835 | 1615 | 186 |
| TLC0309B01 * | 2590 | 870 | 1770 | 192 |
| TLC0310B01 * | 2780 | 905 | 1925 | 198 |
| TLC0311B01 * | 2970 | 940 | 2080 | 204 |
| TLC0312B01 * | 3160 | 975 | 2235 | 210 |

(*) only possible with inner cones

(**) only in basical version



*) 235mm with vibration level switch



solids solutions group
www.solids.eu



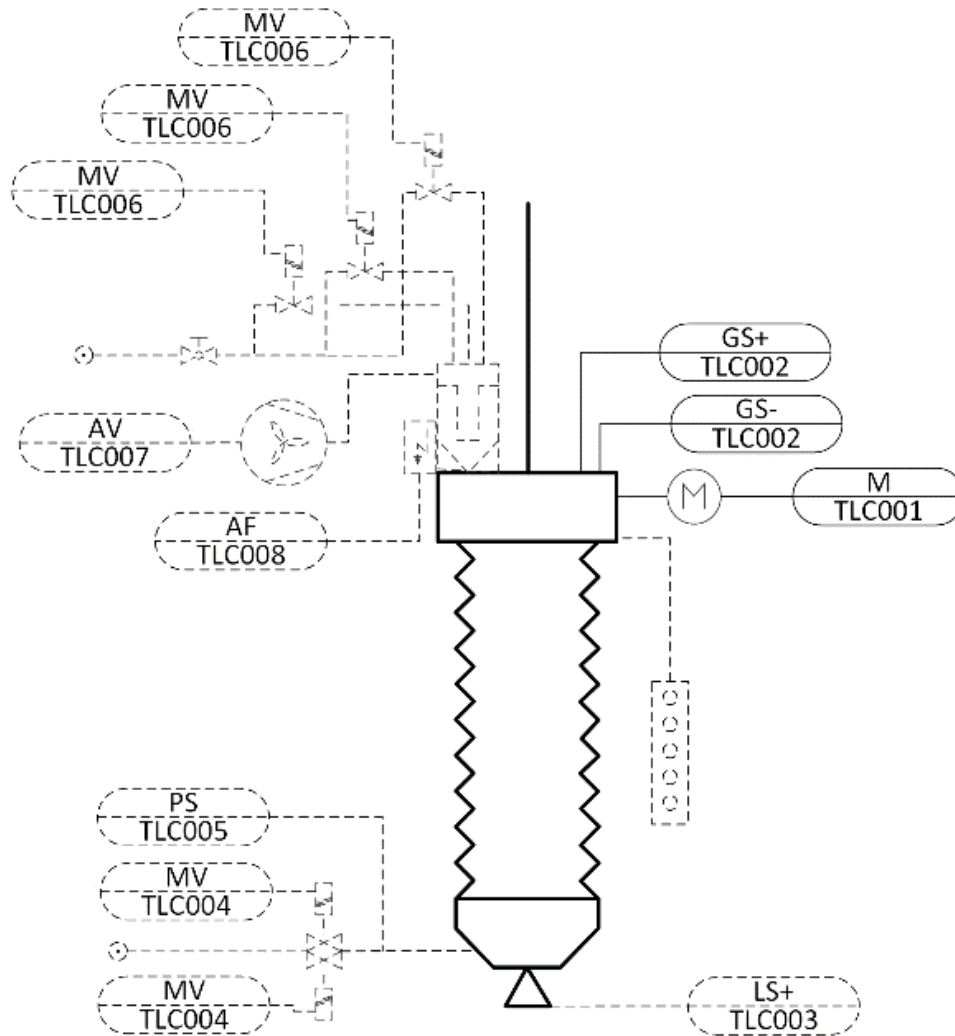


Datasheet solids – Filling Chute TLC3-Basic



Electric parts:

| | Denomination | Manufacturer | Type |
|---|------------------------|---------------|------------------------|
| TLC001 | worm gear motor | Gyros | MSF075 (18rpm, 0,55kW) |
| TLC002 | mecanical limit switch | Telemecanique | XCK-M115 |
| Level switch | | | |
| TLC003 | rotating level switch | Filsa | IRP |
| | vibration level switch | Vega | Vegavib VB61 |
| Pneumatic Installation for inflatable sealing | | | |
| TLC004 | solenoid valve | Norgren | 2623100 |
| TLC005 | pressure switch | Danfoss | RT-112 |
| Integrated filter with cleaning and fan | | | |
| TLC006 | solenoid valve | Autel | AE1818B |
| TLC007 | fan | Sama | CPF-350 (1,5Kw) |
| TLC008 | filter control | | |



solids solutions group
www.solids.eu



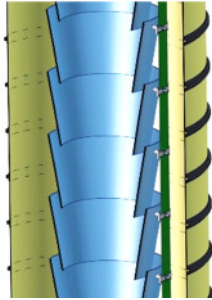


Datasheet solids – Filling Chute TLC3-Basic



Options:

1. Bellows with carbon steel cones



2. Bellows with wear-resistant cones

3. With parts in contact with the material made of stainless steel 1.4306

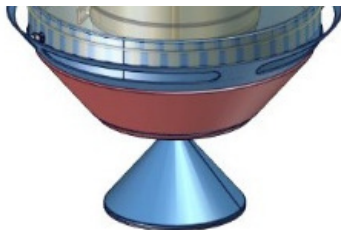
4. With parts in contact with the material made of stainless steel 1.4404

5. With parts in contact with the material made of stainless steel 1.4571

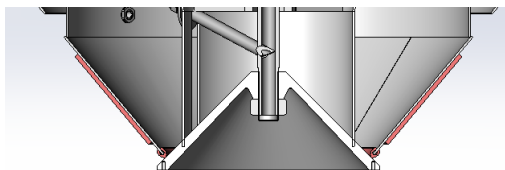
6. Special bellows for high temperature made of viton, suitable for product temperature up to 250°C

7. Bellows material acid- and harmful substance-proof

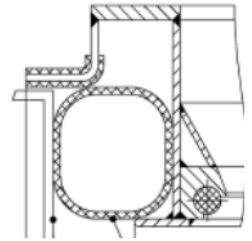
8. With fixed outlet cone



9. With locking cone, prevents product reflow when moving up



10. Dust tight by pneumatically sealed filling nozzle with inflatable sealing, no damage to the environment, no cleaning costs, Low aspiration air capacity, therefore smaller exhaust air filter and smaller fan. Air flow: 150 m³/h



11. With rotating blade level switch



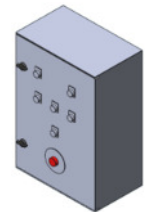
12. With vibrating level switch

13. Suitable for zone 21 inside category 2 acc. ATEX 2014/34/EU

14. Electrical parts of the basic version suitable for Atex Ex II 3D

15. Electrical parts of the basic version suitable for Atex Ex II 2D

16. With control cabinet



17. With pendant station





Datasheet solids – Filling Chute TLC3-Basic



- 18. With integrated filter, with cleaning by compressed air, 4,5 m² filter area
- 19. Fan with max. 700m³/h aspiration capacity



- 20. Filter control

Related documents:

3D-Part: Type.step (example: **TLC03B01**. Step)
2D-planning drawing: Type.dxf (example: **TLC03B01**. dxf)
Selection criteria: SG-TLC-TLC
Pricelist: PL-TLC-Basic
Drawing numbers list: Draw-No-List_TLC-Basic



solids solutions group
www.solids.eu

